

LEARNING
SERIES

.....
Educator
Workshop



Transportation in America



DURATION: 75 MINUTES

EXHIBITS: RAILROADS, DRIVING AMERICA, PRESIDENTIAL VEHICLES, MADE IN AMERICA, AND HEROES OF THE SKY



INDICATES "DID YOU KNOW?" FACT



INDICATES PHOTO OPPORTUNITY

THIS HIGHLIGHT TOUR CAN BE COMPLETED IN ANY SEQUENCE.

TOPIC: TRANSPORTATION BY RAIL

EXHIBIT: RAILROADS

AS YOU EXPLORE RAILROADS, CONSIDER HOW THE TRANSPORTATION NETWORKS, INCLUDING RAILROADS, WATERWAYS, AND ROADS (USED BY PEDESTRIANS AND HORSE-DRAWN VEHICLES) SUCCESSFULLY LINKED HOMES, FACTORIES AND BUSINESSES.



1 ALLEGHENY LOCOMOTIVE

DON'T MISS: The video presentation "Super Power: The Story of the Alleghenies," which shows the Allegheny in operation. Step up the staircase into the cab of the mighty engine.



DID YOU KNOW? These locomotives were the tallest and heaviest ever built.



2 DEWITT CLINTON LOCOMOTIVE AND PASSENGER COACHES

NOTICE: The great contrast between these locomotives in terms of size and power.

3 BANGOR AND AROOSTOOK PASSENGER CAR

NOTICE: The difference between the size and comfort of this passenger car and the coaches on the DeWitt Clinton. The coaches on the DeWitt Clinton resemble stagecoaches, while the B&A car is enclosed from the weather and designed for passenger comfort.



DID YOU KNOW? Seating in American passenger coaches was more open and democratic than in European railcars, which were divided by social class.



DID YOU KNOW? The Weiser Railroad, a full-scale steam-powered locomotive and passenger train, operates April through December in Greenfield Village®. A roundhouse, depot and railroad turntable are also on display in the village.

PLEASE ANSWER THE QUESTIONS BELOW ONCE YOU'VE COMPLETED THE RAIL TOUR.

Now I know:

.....

.....

.....

.....

.....

.....

.....

.....

Questions to ask at debriefing discussion:

.....

.....

.....

.....

.....

.....

.....

.....

Future lesson ideas:

.....

.....

.....

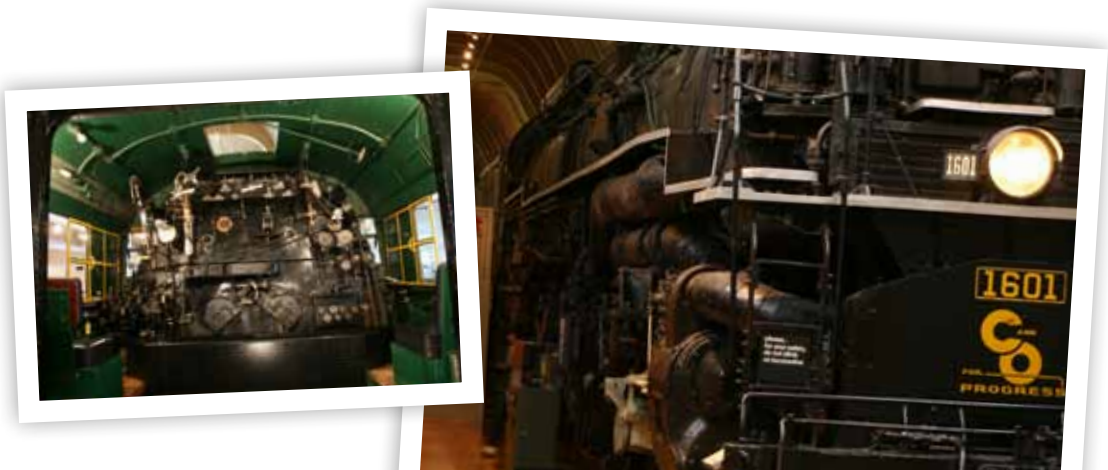
.....

.....

.....

.....

.....



TOPIC: TRANSPORTATION BY AUTOMOBILE

EXHIBITS: DRIVING AMERICA, MADE IN AMERICA, AND PRESIDENTIAL VEHICLES

AS YOU VISIT THE EXHIBITS, CONSIDER HOW EVERYDAY PEOPLE INFLUENCED THE TRANSFORMATION OF AMERICAN SOCIETY INTO A "CAR CULTURE."



1 1959 CADILLAC ELDORADO BIARRITZ CONVERTIBLE & 2009 FORD FOCUS ELECTRIC PROMOTIONAL VEHICLE
(DRIVING AMERICA, NEAR THE MUSEUM CORNERSTONE)

NOTICE: The differences between the two cars, not only in size, shape, and fuel but in the role they played in American society.

2 1896 FORD QUADRICYCLE RUNABOUT (DRIVING AMERICA, "TIMELINE" SECTION) **& 1914 FORD MODEL T TOURING CAR** (DRIVING AMERICA, "HENRY FORD" SECTION)

DON'T MISS: *Help Henry Innovate*, an activity on the interactive kiosk in the Henry Ford, "Innovator" section.

3 2010 EDISON2 (DRIVING AMERICA, "CAR DESIGN" SECTION)

DON'T MISS: Try to engineer and design a marketable vehicle with the *From Concept to Reality* activity on the interactive kiosk.

4 1983 HONDA ACCORD LX SEDAN

(DRIVING AMERICA, "SMALL CARS" SECTION)



DID YOU KNOW? In 1989, the Honda Accord became the first Japanese-badged car to top the annual sales charts in the U.S.

5 1952 FEDERAL 45M TRUCK TRACTOR & 1946 FRUEHAUF SEMI-TRAILER (DRIVING AMERICA, "TRUCKS" SECTION)

NOTICE: Compare the size of this long-haul tractor and trailer to the semi-trucks you see travelling the interstate today.

6 1967 FORD MARK IV SPORTS CAR RACING

(DRIVING AMERICA, "RACING" SECTION)



DID YOU KNOW? The Mark IV's chassis and aerodynamics are quite advanced for their day.

7 MERRIT PARKWAY TOLL BOOTH, ABOUT 1950

(DRIVING AMERICA, "ROADS" SECTION)



DID YOU KNOW? Tolls have been used to fund road maintenance since colonial times.

8 THE MOTOR CITY EXHIBIT CASE

(DRIVING AMERICA, "FAMILY CARS" SECTION)

DON'T MISS: The 1962 map showing the planned route of I-375, which destroyed the African-American Paradise Valley neighborhood.



9 KENNEDY LIMOUSINE (PRESIDENTIAL VEHICLES)

DON'T MISS: The interactive video screen near the Kennedy Limousine, which has terrific background information on the vehicle.



10 EXPLODED MODEL T EXHIBIT & BUILD A MODEL T ACTIVITY (MADE IN AMERICA, "MANUFACTURING" SECTION)



DID YOU KNOW? The Ford Motor Company built over 15 million Model T's and manufactured them on every continent except Antarctica.



PLEASE ANSWER THE QUESTIONS BELOW ONCE YOU'VE COMPLETED THE AUTOMOBILE TOUR.

Now I know:

.....
.....
.....
.....
.....
.....
.....
.....

Questions to ask at debriefing discussion:

.....
.....
.....
.....
.....
.....
.....

Future lesson ideas:

.....
.....
.....
.....
.....
.....
.....

TOPIC: TRANSPORTATION BY AIR

EXHIBIT: HEROES OF THE SKY

AS YOU TOUR HEROES OF THE SKY, CONSIDER THE IMPACT OF THESE DARING INNOVATORS ON SCIENCE, SHOWMANSHIP AND ENTERPRISE.

PLEASE ANSWER THE QUESTIONS BELOW ONCE YOU'VE COMPLETED THE AIR TOUR.



1 WRIGHT FLYER REPLICA
("FIRST FLIGHT GALLERY" SECTION)



DID YOU KNOW? The Wright Home and Wright Cycle Shop are located in Greenfield Village.

2 FORD FLIVVER ("ENTREPRENEURS" SECTION)



DID YOU KNOW? Only two people have ever flown this plane. One of them was Charles Lindbergh, a good friend of Henry Ford.

3 FORD TRI-MOTOR ("ENTREPRENEURS" SECTION)



DID YOU KNOW? The all-metal construction of the Ford Tri-Motor convinced skeptics that the future of commercial aircraft lay in all-metal design.



4 PASSENGER CABINS ("ENTREPRENEURS" SECTION)

NOTICE: The changes in cabin size and comfort as you step from one cabin to another in the following aircraft:

- a. Boeing 40
- b. Ford Tri-Motor
- c. Douglas DC-3

5 SIKORSKY HELICOPTER ("INVENTORS" SECTION)

DON'T MISS: The touch-screen video showing the Sikorsky landing at Henry Ford Museum.

6 TEST YOUR OWN WING DESIGN!

("INVENTORS" SECTION)

DON'T MISS: Step into the "paper airplane shop and make your own paper airplane", then test the flight distance of your aircraft.

7 1925 "JOSEPHINE FORD" FOKKER TRI-MOTOR

("EXPLORERS" SECTION)

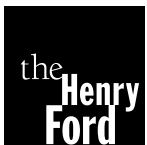
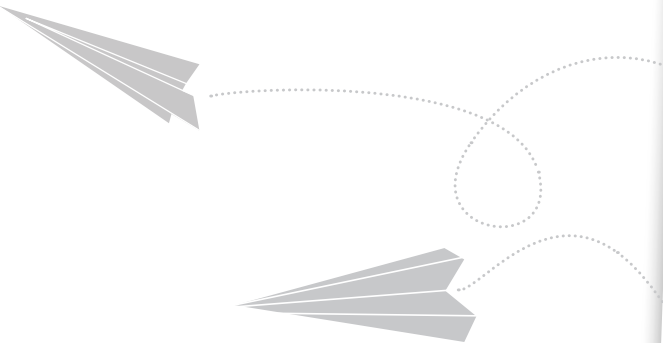
DON'T MISS: The enormous skis fitted onto the landing gear of the plane for Byrd's Arctic expedition.

DON'T MISS: The wing-walker experience near the back of the exhibit.

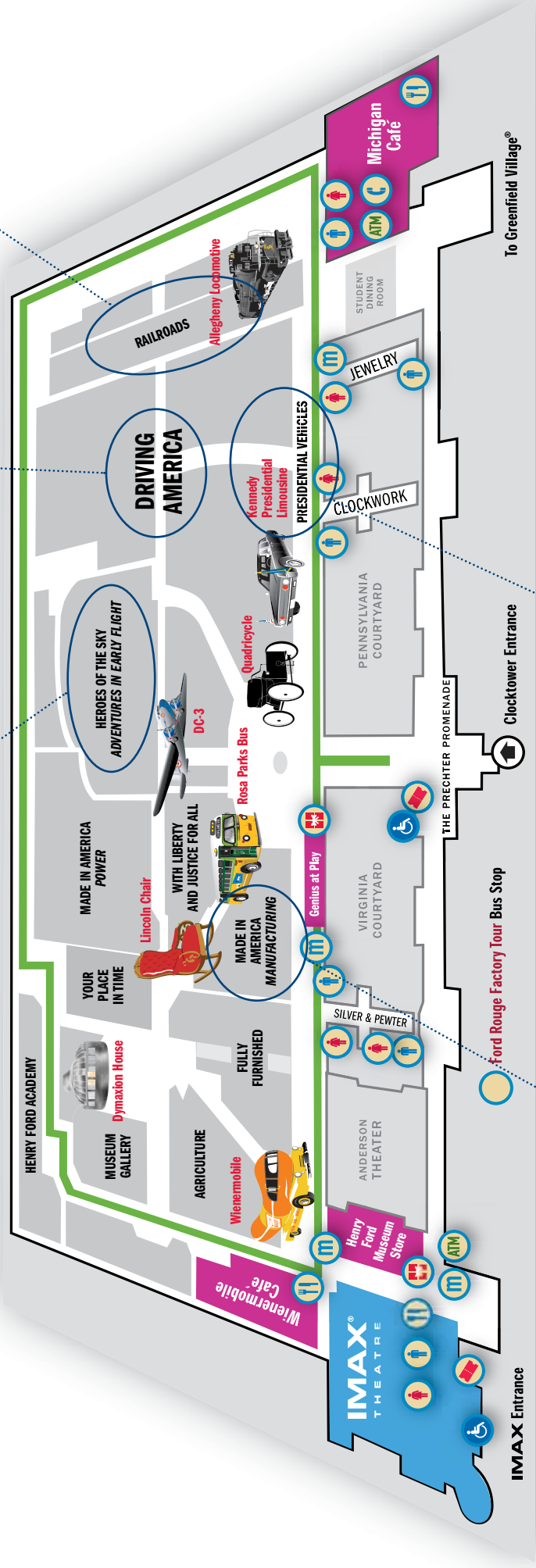
Now I know:

Questions to ask at debriefing discussion:

Future lesson ideas:



Transportation in America must-sees



- Tickets, Information & Membership
- Restaurant
- Women's Restroom
- Men's Restroom
- ATM
- Gift Shop
- Special Needs Rentals
- Molt-A-Rama Souvenirs
- Designated Smoking Area
- Health Through History Route

